

EAGLES RIDGE

Canada




DAVID LLOYD
RESORTS



Mont Tremblant

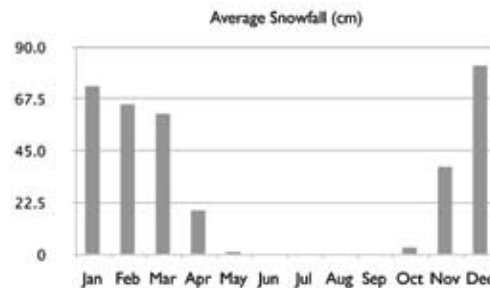
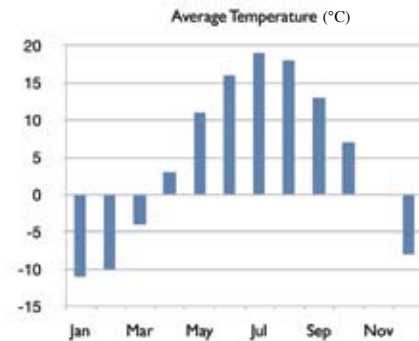
Just a short drive from Montreal, you will find a majestic mountain named Mont Tremblant. Long before the arrival of the white man, the ancient Algonquin Indian tribe named this imposing peak which dominated the landscape "Manitonga Soutana", which means: the mountain of the spirits. Word says any time someone bypassed the laws of nature or disturbed the tranquility of the area, the spirits would make the mountain tremble.

Mont Tremblant Resort is located in the beautiful Laurentian mountains of Quebec, and is recognised as the ski capital of Eastern Canada. The resort has over 600 acres of unrivalled tree-lined runs ideal for skiing and snowboarding, award winning lift services and some marvelous après ski and off-snow facilities which remain distinctly French in feel.

The resort is just 90 minutes from the cosmopolitan and sophisticated city of Montreal, with its bustling shopping centres, international cuisine and vibrant nightlife. Montreal-Trudeau International Airport operates more than 120 direct flights to destinations in the UK, Europe and North America.



Eagles Ridge





Eagles Ridge

David Lloyd Resorts at Eagles Ridge is a stunning new resort in one of Canada's last untouched frontiers. Set deep in the heart of the most beautiful woodland and surrounded by five freshwater lakes, Eagles Ridge is just 15 minutes drive from magnificent skiing conditions

Eagles Ridge is a self-contained community of traditional Canadian Timber log cabins and New England styled properties. The resort is complemented by Eagles Ridge Golf & Country Club with an 18-hole championship course and sumptuous clubhouse. 'Eagles Nest' is set high on the hillside providing sweeping views across the rolling countryside.

During the mild spring and warm summer months, skis are replaced with hiking boots and mountain bikes as the resort takes on a whole new feel. The crystal clear lakes provide fantastic sailing and waterskiing, with the unspoiled natural waters presenting some of the best angling challenges imaginable. An equestrian centre, swimming complex, luxury fitness suite and spa retreat will make Eagles Ridge a truly year-round leisure paradise.



Eagles Ridge Golf Club and a number of championship courses around Mont Tremblant



Wide selection of day spas and retreats in Mont Tremblant



13 world class clay courts at Tremblant Tennis Club, with coaching from top professional Andre Lemair



Resort dining plus a wide variety of international restaurants in Mont Tremblant



Mont Tremblant – skiing, snowboarding, ice-skating, dog sledding, ski-doo's and après-ski



Montreal-Trudeau airport – 90 mins



Freshwater kayaking, sailing, waterskiing and swimming.



Indoor and outdoor swimming pools. Riding, mountain biking, hiking, jogging trails and fitness suite

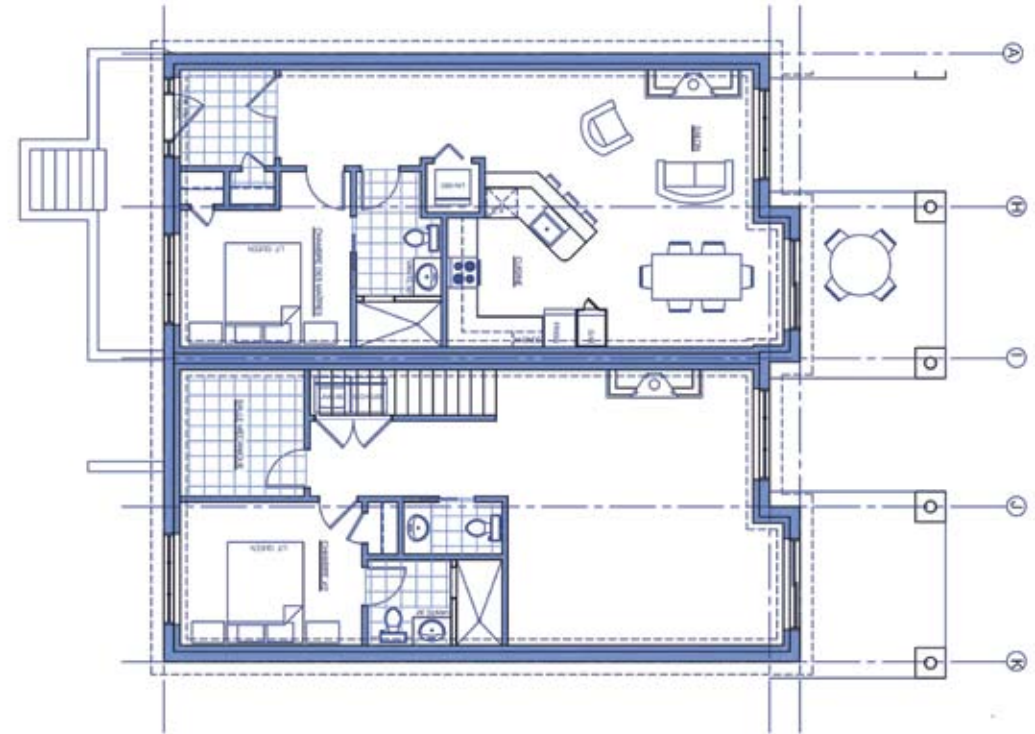


Lake Lodges

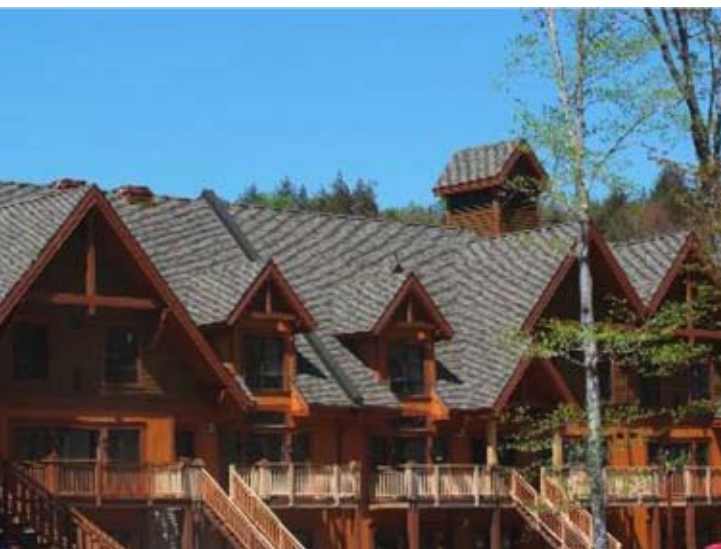
2 Bedroom, 2 Bathroom
97 sqm Internal, 5 sqm External

Exclusively set in pristine woodland on the shores of Lac McGale, each 'Lake Lodge' has been positioned to optimise the south-facing views towards the lake. Each 'Lake Lodge' comprises 2 full size bedrooms with en-suite, plus a pull-out sofa in the lounge with loft-vaulted ceilings and open balconies, maximising occupancy and comfort for all.

Each property is fully furnished in traditional Canadian timber finishes adding to the ambiance and authenticity of the surrounding natural landscape. The American style Kitchen Diner comes fully fitted with granite surfaces and branded quality appliances. The living experience is rounded off with a balcony and picture window views to the lake.



Layout & measurements are for representation only and may differ from finished dimensions.



Lake Lodges

Front and Rear Elevations



David Lloyd Resorts Clubhouse

The planned Spa Clubhouse will benefit from Canadian log styling, large open fire places, picture window towards lake and will include:

- Fully-fitted gym
- Indoor and outdoor swimming pools & Spa
- 4 all-weather tennis courts
- Clubhouse dining/bar
- Walk-out Pontoon-deck

Layout & measurements are for representation only and may differ from finished dimensions.



info@davidlloydresorts.com
www.davidlloydresorts.com

